



6 Dormitorios Casa en The Golden Mile

The Golden Mile

R4766305 – 6.400.000 €



6



6



647 m²



1441 m²

Sofisticada villa independiente ubicada en una prestigiosa urbanización en la Milla de Oro - Lomas de Marbella Club. Es una de las zonas residenciales de lujo más populares de Marbella, manteniendo su elegante y aspecto original, con amplias y perfectas áreas verdes, seguridad las 24 horas, calidad de vida y arquitectura. La urbanización se encuentra a 10 minutos del centro de Marbella, a 40 km de Málaga. Aeropuerto Internacional, a 50 km de la estación de AVE y a 85 km del Aeropuerto de Gibraltar. Su ubicación al norte de la Milla de Oro, frente a Puente Romano y cerca de la Mezquita Real con su impresionante arquitectura árabe andaluza, la convierte en una zona privilegiada. Por otro lado, la urbanización está cerca de un mítico hotel 5*, restaurantes con estrella Michelin, numerosos campos de golf y colegios internacionales, Marbella y Puerto Banús. Amplia variedad de boutiques de moda, restaurantes y vida nocturna.

HHomes

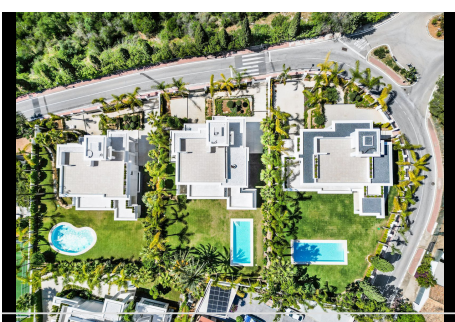
SEARCH FIND LOVE



HHomes - Camino de Camoján s/n, Edificio Camoján Center Oficina nº 15
Tel.: +34 951 543 462 – Email: info@hhomes.es – Web: <https://hhomes.es>

HHomes

SEARCH FIND LOVE



DETACHED VILLAS

NAME	BEST
Garage	10.00 m ²
Basement	20.00 m ²
Basement 1	20.00 m ²
Basement 2	20.00 m ²
Basement 3	20.00 m ²
Basement 4	20.00 m ²
Basement 5	20.00 m ²
Basement 6	20.00 m ²
Basement 7	20.00 m ²
Basement 8	20.00 m ²
Basement 9	20.00 m ²
Basement 10	20.00 m ²
Basement 11	20.00 m ²
Basement 12	20.00 m ²
Basement 13	20.00 m ²
Basement 14	20.00 m ²
Basement 15	20.00 m ²
Basement 16	20.00 m ²
Basement 17	20.00 m ²
Basement 18	20.00 m ²
Basement 19	20.00 m ²
Basement 20	20.00 m ²
Basement 21	20.00 m ²
Basement 22	20.00 m ²
Basement 23	20.00 m ²
Basement 24	20.00 m ²
Basement 25	20.00 m ²
Basement 26	20.00 m ²
Basement 27	20.00 m ²
Basement 28	20.00 m ²
Basement 29	20.00 m ²
Basement 30	20.00 m ²
Basement 31	20.00 m ²
Basement 32	20.00 m ²
Basement 33	20.00 m ²
Basement 34	20.00 m ²
Basement 35	20.00 m ²
Basement 36	20.00 m ²
Basement 37	20.00 m ²
Basement 38	20.00 m ²
Basement 39	20.00 m ²
Basement 40	20.00 m ²
Basement 41	20.00 m ²
Basement 42	20.00 m ²
Basement 43	20.00 m ²
Basement 44	20.00 m ²
Basement 45	20.00 m ²
Basement 46	20.00 m ²
Basement 47	20.00 m ²
Basement 48	20.00 m ²
Basement 49	20.00 m ²
Basement 50	20.00 m ²
Basement 51	20.00 m ²
Basement 52	20.00 m ²
Basement 53	20.00 m ²
Basement 54	20.00 m ²
Basement 55	20.00 m ²
Basement 56	20.00 m ²
Basement 57	20.00 m ²
Basement 58	20.00 m ²
Basement 59	20.00 m ²
Basement 60	20.00 m ²
Basement 61	20.00 m ²
Basement 62	20.00 m ²
Basement 63	20.00 m ²
Basement 64	20.00 m ²
Basement 65	20.00 m ²
Basement 66	20.00 m ²
Basement 67	20.00 m ²
Basement 68	20.00 m ²
Basement 69	20.00 m ²
Basement 70	20.00 m ²
Basement 71	20.00 m ²
Basement 72	20.00 m ²
Basement 73	20.00 m ²
Basement 74	20.00 m ²
Basement 75	20.00 m ²
Basement 76	20.00 m ²
Basement 77	20.00 m ²
Basement 78	20.00 m ²
Basement 79	20.00 m ²
Basement 80	20.00 m ²
Basement 81	20.00 m ²
Basement 82	20.00 m ²
Basement 83	20.00 m ²
Basement 84	20.00 m ²
Basement 85	20.00 m ²
Basement 86	20.00 m ²
Basement 87	20.00 m ²
Basement 88	20.00 m ²
Basement 89	20.00 m ²
Basement 90	20.00 m ²
Basement 91	20.00 m ²
Basement 92	20.00 m ²
Basement 93	20.00 m ²
Basement 94	20.00 m ²
Basement 95	20.00 m ²
Basement 96	20.00 m ²
Basement 97	20.00 m ²
Basement 98	20.00 m ²
Basement 99	20.00 m ²
Basement 100	20.00 m ²

HHomes - Camino de Camojan s/n, Edificio Camoján Center Oficina nº 15
 Tel.: +34 951 543 462 – Email: info@hhomes.es – Web: https://hhomes.es

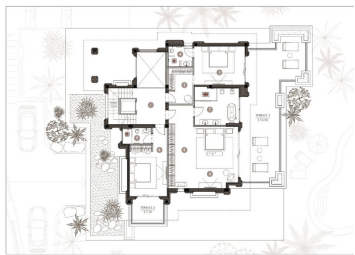
HHomes

SEARCH FIND LOVE

DETACHED VILLAS

FIRST FLOOR

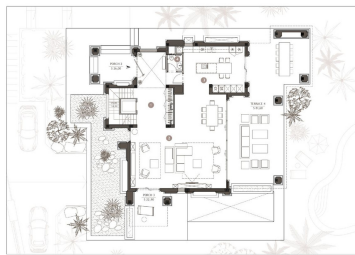
NAME	BUILT
Garage	12.00 m ²
Bedroom 1	8.00 m ²
Bedroom 2	8.00 m ²
Bedroom 3	8.00 m ²
Bedroom 4	8.00 m ²
Living Room	12.00 m ²
Dining Room	12.00 m ²
Kitchen	12.00 m ²
Bathroom 1	4.00 m ²
Bathroom 2	4.00 m ²
Bathroom 3	4.00 m ²
Bathroom 4	4.00 m ²
Roof Terrace	12.00 m ²
TOTAL AREA	132.00 m ²



DETACHED VILLAS

GROUND FLOOR

NAME	BUILT
Garage	12.00 m ²
Bedroom 1	8.00 m ²
Bedroom 2	8.00 m ²
Bedroom 3	8.00 m ²
Bedroom 4	8.00 m ²
Living Room	12.00 m ²
Dining Room	12.00 m ²
Kitchen	12.00 m ²
Bathroom 1	4.00 m ²
Bathroom 2	4.00 m ²
Bathroom 3	4.00 m ²
Bathroom 4	4.00 m ²
Roof Terrace	12.00 m ²
TOTAL HOUSE AREA	132.00 m ²



DETACHED VILLAS

ROOF TERRACE

NAME	BUILT
Roof Terrace	12.00 m ²
TOTAL AREA	12.00 m ²

