



3 Dormitorios Apartamento Planta Media en Manilva

Manilva

R4691770 – 749.000 €



3



4



244 m²

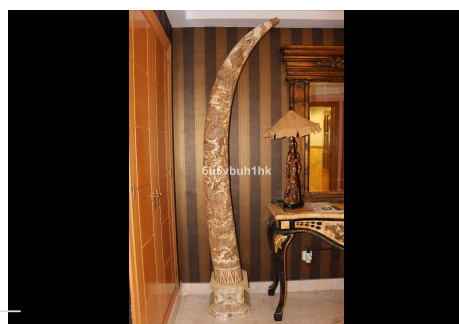
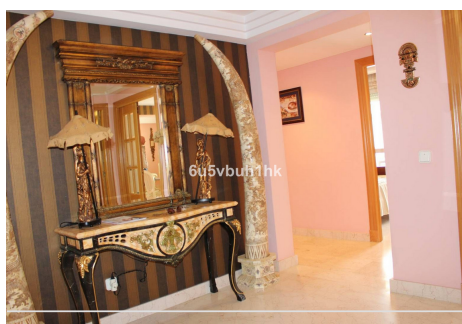
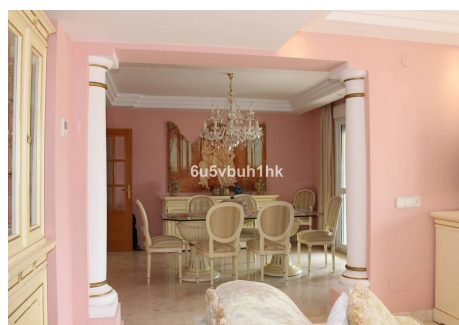
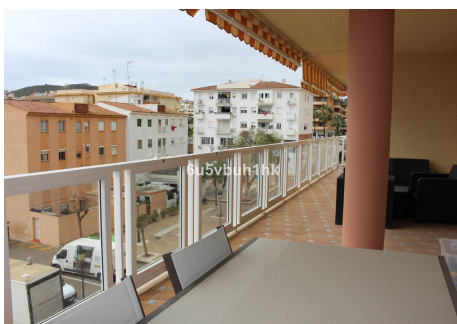
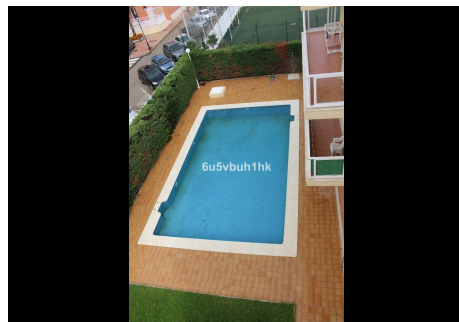


m²

Presentamos este fantástico piso en Sabinillas de mas de 244 m2 incluyendo las dos fantásticas terrazas de casi 40 metros. El piso consta de 4 Habitaciones, tres baños completos uno de ellos en suite con amplio vestidor incluso, con todo lujo de detalles y se vende con mobiliario exclusivo incluido. Cabe destacar la amplitud de sus estancias. Originariamente eran tres pisos y se adaptó en uno solo, conservando aun dos fincas registrales independientes con posibilidad de dividir. Disponemos de plaza de garaje, y piscina comunitaria. Estaré encantado de enseñártelo.

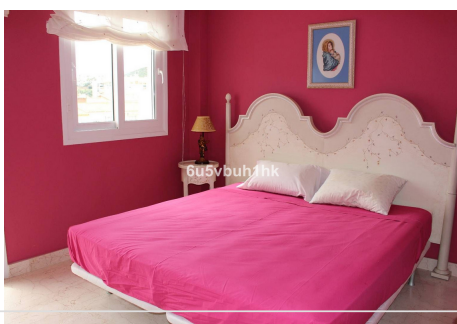
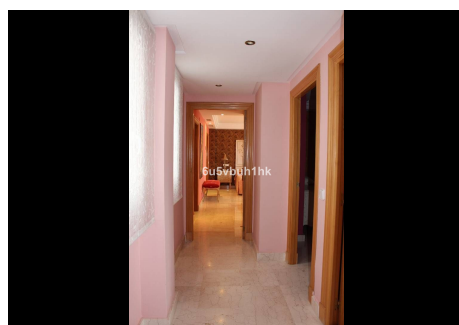
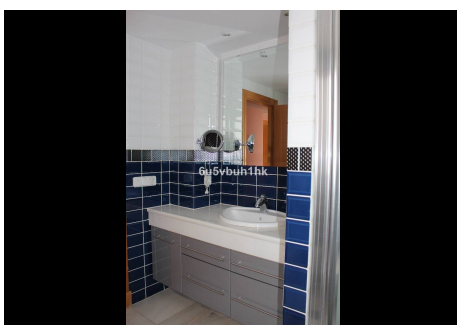
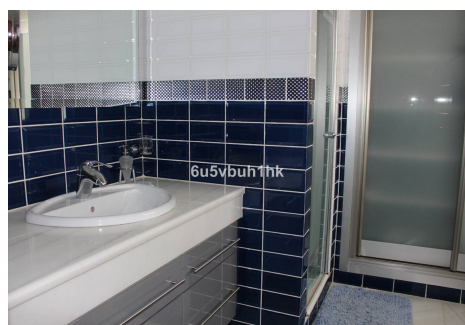
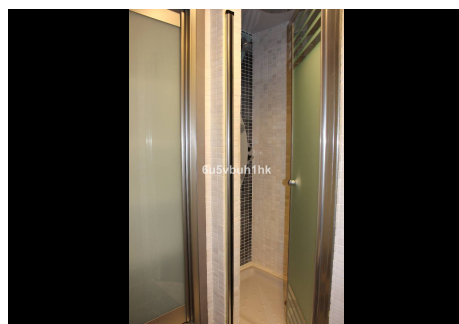
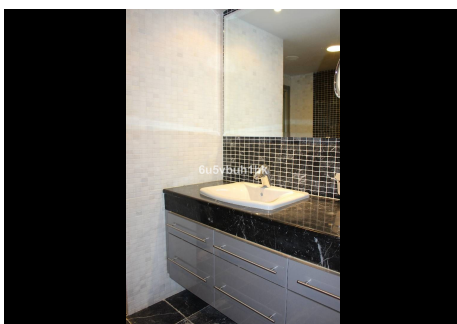
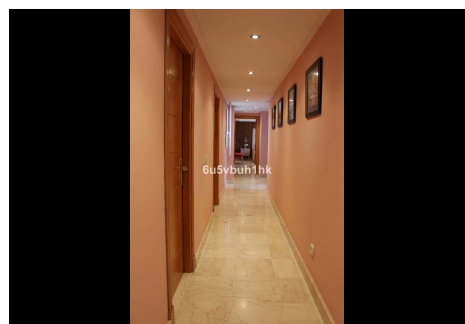
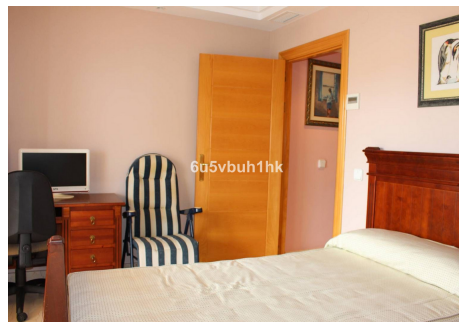
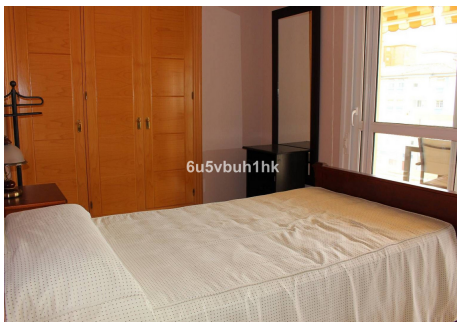
HHomes

SEARCH FIND LOVE



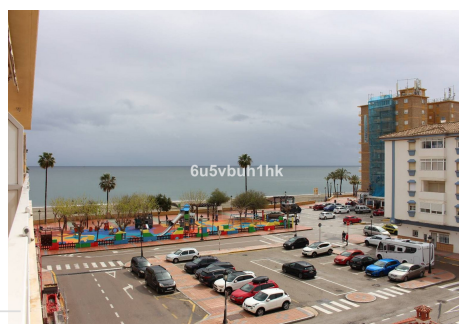
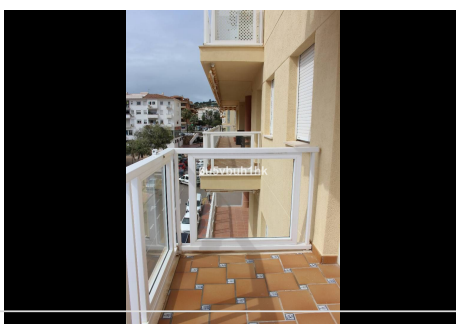
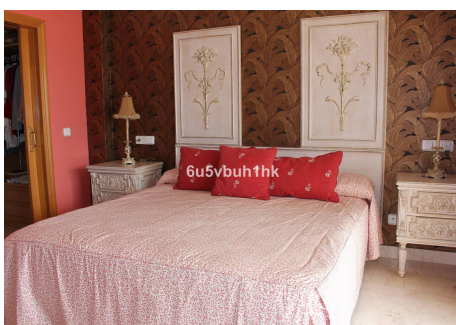
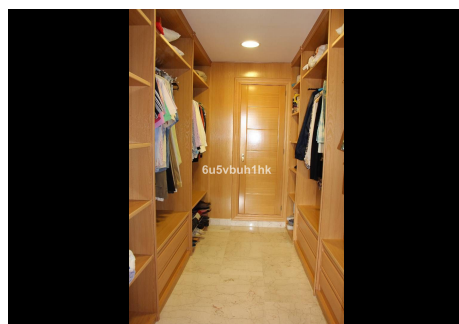
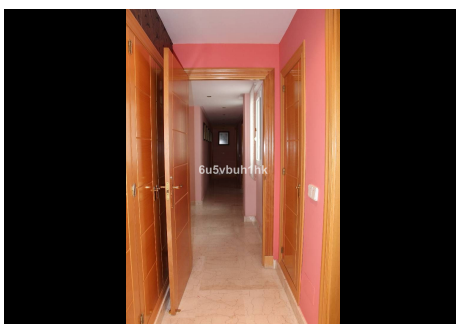
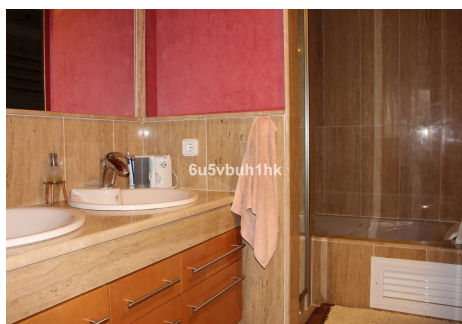
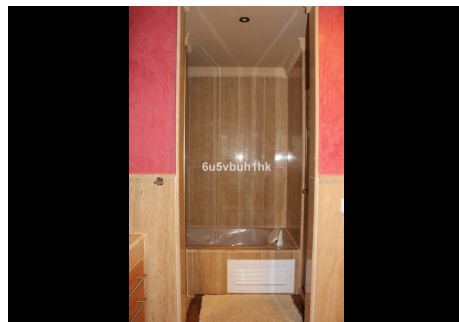
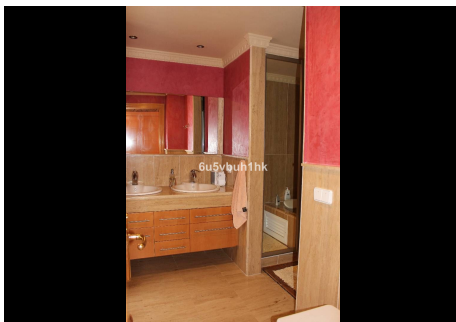
HHomes

SEARCH FIND LOVE



HHomes

SEARCH FIND LOVE



HHomes - Camino de Camojan s/n, Edificio Camoján Center Oficina nº 15
Tel.: +34 951 543 462 – Email: info@hhomes.es – Web: <https://hhomes.es>

HHomes

SEARCH FIND LOVE

