



## 2 Bedrooms Penthouse in Manilva

Manilva

**R5136499 – 290.000 €**



2



2



100 m<sup>2</sup>



21 m<sup>2</sup>

**Penthouse with Panoramic Sea Views!**

### Between Sea and Mountains

Nestled in a quiet valley in Manilva, this penthouse offers breathtaking views of the Mediterranean, Gibraltar, and the Moroccan coastline. It combines tranquility with proximity to the beaches and Sotogrande. The architecture blends perfectly into its natural surroundings, making it an ideal choice for an elegant holiday home or a sunny year-round residence.

### Layout & Features

Spacious living-dining room opening onto a generous terrace with sea views

# Homes

SEARCH FIND LOVE

Fully fitted kitchen with brand-new appliances  
2 bedrooms with built-in wardrobes  
2 bathrooms, including one en-suite in the master bedroom  
Marble flooring  
Newly installed ducted air conditioning (hot/cold)  
Residence Highlights

Boutique complex with just 3 low-rise buildings surrounded by large green areas  
Swimming pool with stunning sea views for a relaxed Mediterranean lifestyle  
Parking space and storage room included in the price

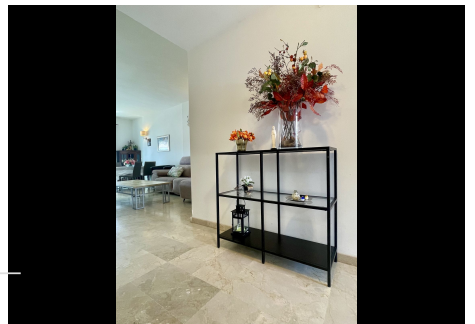
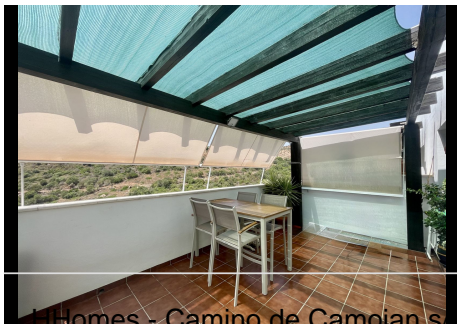
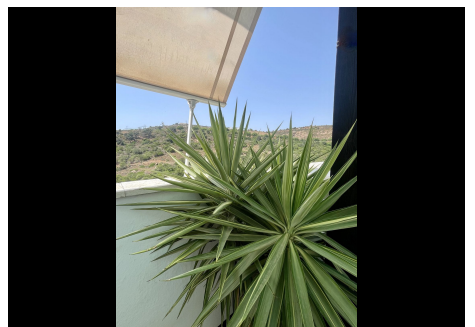
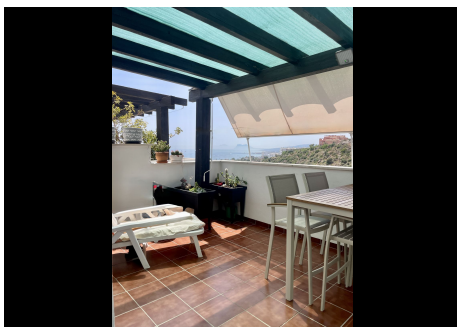
## Location & Amenities

Less than 1 km from the Mediterranean beaches  
Only 3 minutes from Sotogrande (marina, restaurants, services)  
Nearby supermarkets: Lidl, Mercadona, Supercor, plus schools and restaurants  
Excellent connections with surrounding towns of the Costa del Sol

## Key Information

Type: Penthouse – 2 bedrooms | 2 bathrooms  
Parking & Storage: 1 parking space + 1 storage room included  
Why We Love It

A top-floor home flooded with natural light, a terrace where the sea is always in view, and a peaceful residence – everything you need to fully enjoy life on the Costa del Sol.



# HHomes

SEARCH FIND LOVE

