



6 Bedrooms House in Nueva Andalucía

Nueva Andalucía

R4818838 – 3.600.000 €



6



8



1000 m²



1000 m²

Welcome to this architectural masterpiece and prestigious Grade II listed villa, renowned for its stunning contemporary design and commanding presence in Marbella's elite Golf Valley. Perched frontline and above the esteemed Aloha Golf Course, this villa offers unparalleled tranquility and privacy, with unobstructed views of the Mediterranean Sea and the iconic La Concha Mountain, the signature peak of Marbella. Its elevated position ensures that neighbours and golfers alike cannot view into the villa, garden, or pool, providing a serene and private retreat. The villa's spectacular setting has even made it a sought-after location for movies and commercial advertisements. Facing the National Park, including the lush Pine Forest and La Concha Mountain, this stunning villa creates the illusion of being nestled deep in the countryside. Yet, in reality, it is just a short 4.0 km drive to the famous Puerto Banús Yacht Harbor and Beach, with multiple routes leading to the Golden Mile, Marbella Town Center, and various pristine beaches. Convenient access to major roads and highways allows for a quick 45-minute drive to Malaga Airport, and

HHomes - Camino de Camoján s/n, Edificio Camoján Center Oficina nº 15

Tel.: +34 951 543 462 – Email: info@hhomes.es – Web: <https://hhomes.es>

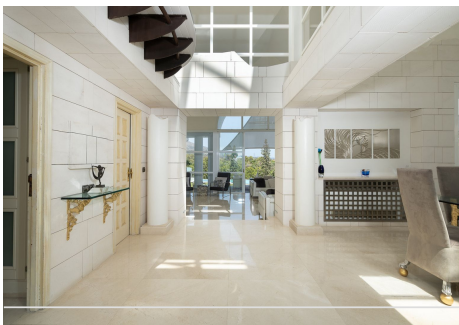
HHomes

SEARCH FIND LOVE

the local heliport is just two minutes away. For outdoor enthusiasts, the villa offers direct access to jogging, walking, or cycling routes around Aloha Valley, through the National Park, past the Aloha Golf Clubhouse, and back to the villa—an approximately 3-4 km round trip with stunning natural and golf course views. Interior Highlights: Constructed with no expense spared, the house features top-quality materials, fixtures, and fittings throughout. The villa's interiors are designed to impress even the most discerning, with cathedral-height ceilings, remarkable modern architecture, and art all around. Natural light floods the space during the day, while at night, the villa can be beautifully illuminated with floodlighting. Main Level: - Entering the villa feels like arriving at a fortress, with a bastion-like entrance and a striking glass bridge leading to the imposing entrance doors and a high-glazed hallway. - Two luxurious lounges, each with large open fireplaces and piano, offer breathtaking views of the mountain and sea, with direct access to the terraces. - A guest toilet is conveniently located for visitors. - The dining room also opens directly onto the terraces, perfect for al fresco dining. - The gourmet kitchen by Porcelanosa is a chef's dream, featuring granite surfaces, granite floors, and an extensive range of Gaggenau appliances, with easy access to outdoor dining areas. - The inner hallway leads to the master bedroom suite, which opens directly onto the terraces, and includes a master bathroom with terrace access. - A second bedroom, also with terrace access, is accompanied by a second bathroom. - A stunning architectural staircase by David Marshall ascends to a studio/office. Lower Level - Two additional themed bedroom suites, each with large en-suite bathrooms. - A spacious apartment featuring a kitchen, large en-suite facilities, and a lounge area with separate access to the spa and pool. - A unique glass-walled bedroom suite, complete with a hydrotherapy spa bath, toilet, shower, and more. - A professional cinema offers a top-tier entertainment experience. - The fully-equipped gymnasium caters to fitness enthusiasts. - A feature wine bodega is perfect for wine connoisseurs. - Additional amenities include a large hallway, guest toilet, laundry, and extensive garaging. - Marble floors extend throughout the villa, with granite floors in the kitchen, complemented by architectural features by David Marshall and advanced security systems. Exterior Features: The villa's rear exterior is equally impressive, with extensive slate-covered wrap-around terraces, a large outdoor dining area, and a stunning infinity pool that is power-covered, lighted, and heated. A top-of-the-range High Life six-person hot tub offers views directly across the golf course to the Mediterranean Sea and La Concha Mountain. Adjacent to the pool, a fully equipped bar and BBQ area provides a perfect spot for entertaining, complete with extensive covered seating areas. The villa is fully air-conditioned and equipped with numerous services designed for maximum comfort. With six bedrooms and eight bathrooms, an important feature is the separation of each bedroom to ensure the utmost privacy and quiet living, even with a fully occupied villa. The masterpiece is not just a residence; it is a unique sanctuary of luxury, privacy, and architectural brilliance, offering an unmatched living experience in one of Marbella's most prestigious locations.

HHomes

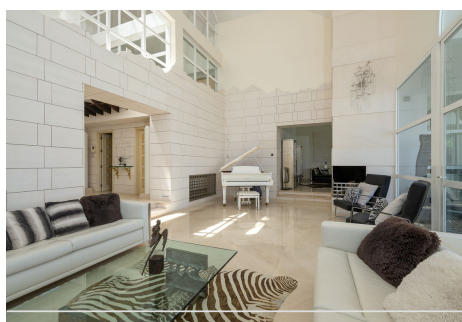
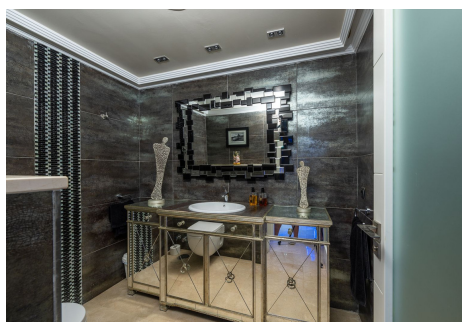
SEARCH FIND LOVE



HHomes - Camino de Camojan s/n, Edificio Camoján Center Oficina nº 15
Tel.: +34 951 543 462 – Email: info@hhomes.es – Web: <https://hhomes.es>

HHomes

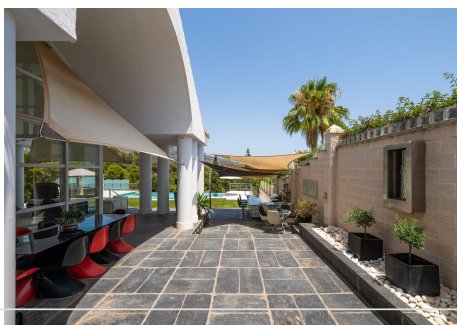
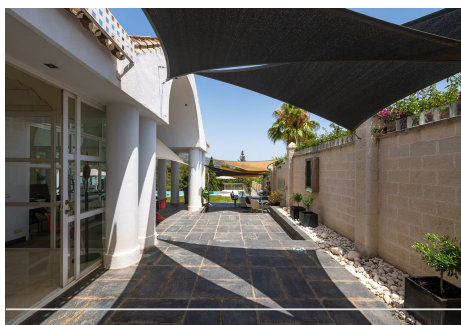
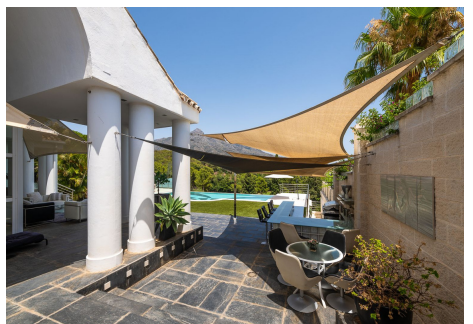
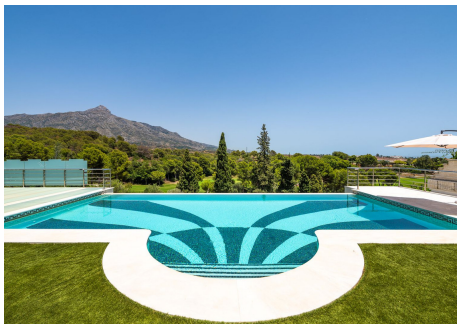
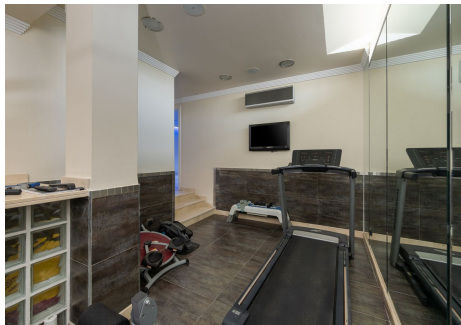
SEARCH FIND LOVE



HHomes - Camino de Camojan s/n, Edificio Camoján Center Oficina nº 15
Tel.: +34 951 543 462 – Email: info@hhomes.es – Web: <https://hhomes.es>

HHomes

SEARCH FIND LOVE



HHomes - Camino de Camojan s/n, Edificio Camoján Center Oficina nº 15
Tel.: +34 951 543 462 – Email: info@hhomes.es – Web: <https://hhomes.es>

HHomes

SEARCH FIND LOVE

