



3 Bedrooms Middle Floor Apartment in Atalaya

Atalaya

R4750354 – 825.000 €



3



2



122 m²



50 m²

Ready to move in, modern, design apartment for sale near the golf course in the golden triangle of Marbella - Benahavis - Estepona Property highlights: Design apartments on a domain of more than 9 hectares adjacent to the golf course. The complex is characterized by its low building density, large open spaces with gardens, beautiful swimming pools and sports facilities. Bright and airy apartment with a spacious open plan living space. Sliding windows from floor to ceiling and a very spacious semi-open overhanging floating terrace for the perfect outdoor living feeling. Many extras for optimal living comfort! Ready to move in. The location: The complex is located in the golden triangle of the municipalities of Marbella, Benahavis and Estepona. Within walking distance of the adjacent golf club and clubhouse, a large Mercadona supermarket and an international school. Just a 5 minute drive from San Pedro and 10 minutes to Puerto Banus. The complex: Design apartments on a fenced and secured domain of more than 9 hectares adjacent to the golf course. Recently built trendsetting project. The complex is characterized by its low building density, large

HHomes - Camino de Camoján s/n, Edificio Camoján Center Oficina nº 15

Tel.: +34 951 543 462 – Email: info@hhomes.es – Web: <https://hhomes.es>

Homes

SEARCH FIND LOVE

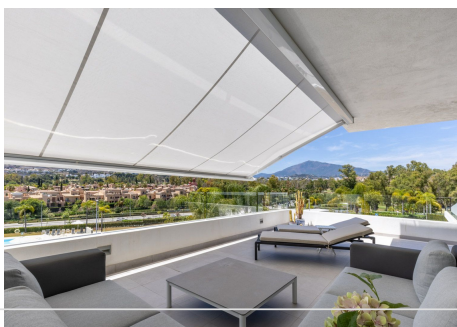
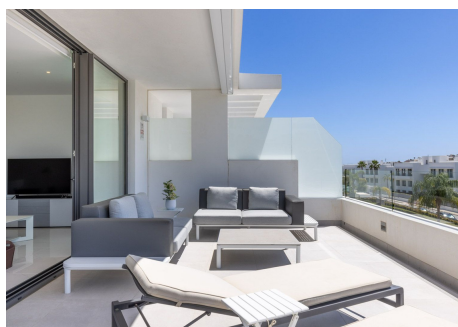
open spaces with gardens, beautiful swimming pools, sports facilities, walking paths and a playground. The complex consists of 3 independent phases. Each phase is fenced and has its own gardens and swimming pool. This beautiful apartment is located in the most sought after phase II: Plot of 27,000m² with 10 residential blocks. The pool in phase 2 consists of a 450m² lagoon pool with two beach-like entryways to the pool, perfect for sunbathing in the water. It is surrounded by the sun terrace and garden. The indoor heated swimming pool connects to this thanks to the large sliding windows that open and embed themselves in the walls. This makes it possible to swim at a pleasant temperature in an environment full of natural light and air, and enjoy the view of the gardens and the outdoor pool. The apartment: *In figures: Total built area: 172m² Built area: 122m² Terrace: 50m² 3 bedrooms 2 Bathrooms *Description: Bright corner apartment with a spacious open plan living space. 3 Bedrooms, 2 bathrooms of which 1 ensuite. Located on the first floor. Designer bathrooms and kitchen. West-facing. Sun from noon to evening. Unobstructed view of the beautiful gardens, the swimming pool of phase 1 and the surrounding greenery and mountains. It is no longer possible to build in front of or around the apartment. This apartment is further distinguished by the many improvements and accessories made, which complete the living comfort. The list is too long to summarize, but is available when visiting. A small selection of these extras include: - Remote controlled, terrace large sunshade. - Double lining curtains. - Remote controlled roll curtains. - Mosquito screens, sunscreen and double curtains to fully darken the bedrooms. - Dimmable spots. *The main features: Light aluminium sliding windows from floor to ceiling and a spacious semi-open corner terrace. Recessed window profiles for an almost seamless transition between inside and outside. In the corner apartment, the sliding windows can be opened to create a completely open corner and the indoor and outdoor space merge into one whole. Overhanging floating terrace. Porcelain tile floors. Frameless glass balustrades. Indirect LED lighting on the terrace. Open plan kitchen from Porcelanosa. Kitchen island with KRION worktop. Ceiling extractor. Utility room with shelves. Other features: Air conditioning for cooling and heating. Safe. Airzone Smart Thermostats. Wall-hung toilet with hidden cistern. Washbasin KRION. Rain shower. Light switches in white glass. Fitted wardrobes. Alarm system. 2 convenient garage spaces and 1 spacious storage room with floor-to-ceiling shelves. The high-quality furniture is optional.



HHomes - Camino de Camoján s/n, Edificio Camoján Center Oficina nº 15
Tel.: +34 951 543 462 – Email: info@hhomes.es – Web: <https://hhomes.es>

HHomes

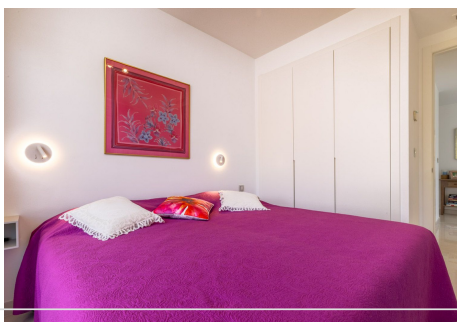
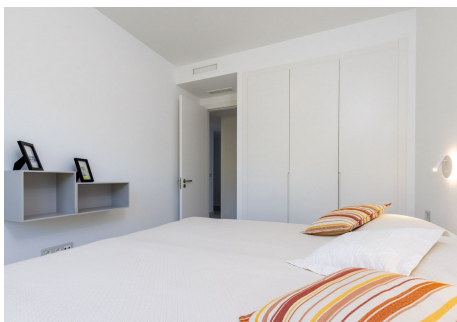
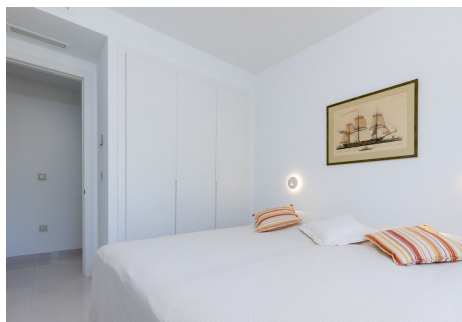
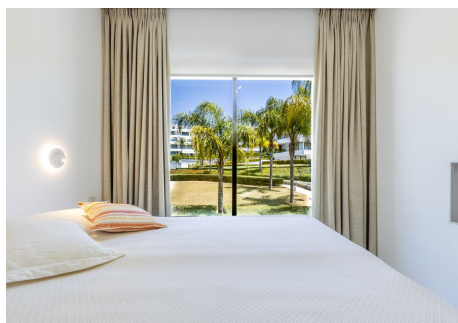
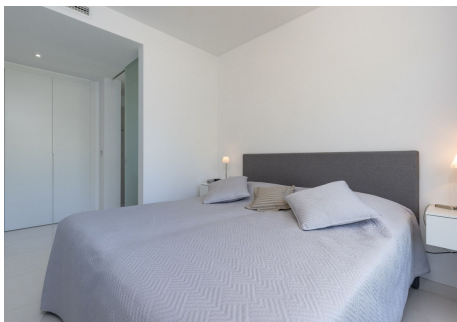
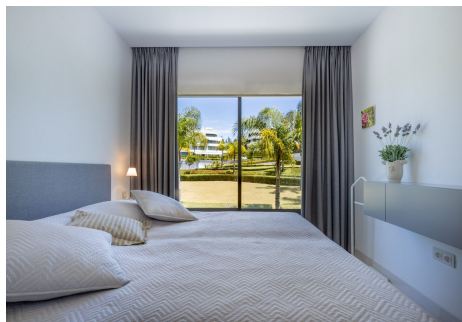
SEARCH FIND LOVE



HHomes - Camino de Camoján s/n, Edificio Camoján Center Oficina nº 15
Tel.: +34 951 543 462 – Email: info@hhomes.es – Web: <https://hhomes.es>

HHomes

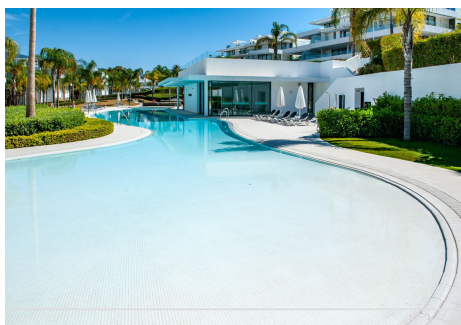
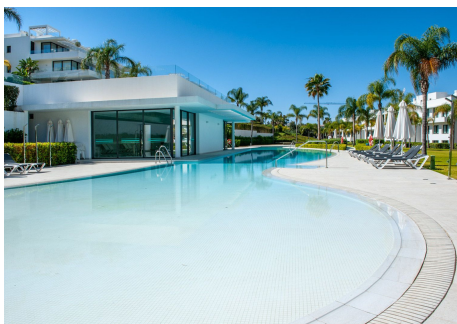
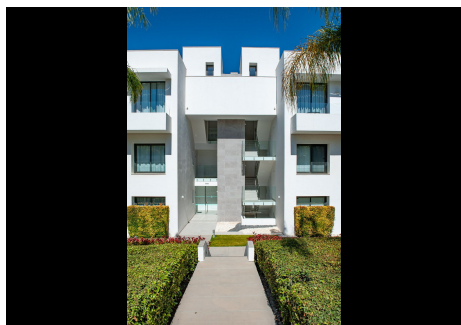
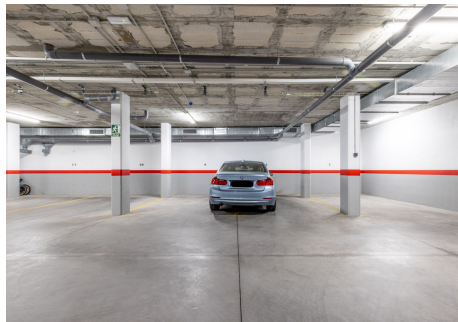
SEARCH FIND LOVE



HHomes - Camino de Camoján s/n, Edificio Camoján Center Oficina nº 15
Tel.: +34 951 543 462 – Email: info@hhomes.es – Web: <https://hhomes.es>

HHomes

SEARCH FIND LOVE



HHomes - Camino de Camojan s/n, Edificio Camoján Center Oficina nº 15
Tel.: +34 951 543 462 – Email: info@hhomes.es – Web: <https://hhomes.es>

HHomes

SEARCH FIND LOVE

