



2 Bedrooms Penthouse Duplex in Benahavis

Benahavis

R4695097 – 680.000 €



2



2



107 m²



136 m²

Stunning duplex penthouse with spacious solarium, jacuzzi and panoramic sea and mountain views, Lomas del Marqués, Benahavis. Stunning Lomas del Marqués duplex penthouse with terrace and spacious solarium, boasting 360 degree panoramic views. This amazing south west facing property has panoramic mountain and sea views. The jacuzzi and outdoor kitchen on the solarium enhance the outdoor living experience. The exclusive residential area Lomas del Marques is gated with 24-hour security. It's designed in the style of a traditional Andalusian white village by the architectural studio Hugo Torrico. They designed, among others, the famous Puente Romano and Marbella Club hotels. The community has two communal pool areas, amazing gardens and a gym. It is located within walking distance from a supermarket and an international school, close to the beach and a short drive will bring you to Puerto Banus, Marbella, Benahavis, San Pedro de Alcántara or Estepona. There are several Golf courses within a two kilometre radius and a trackman driving range across the street. The TrackMan Driving Range system is used by 96

HHomes

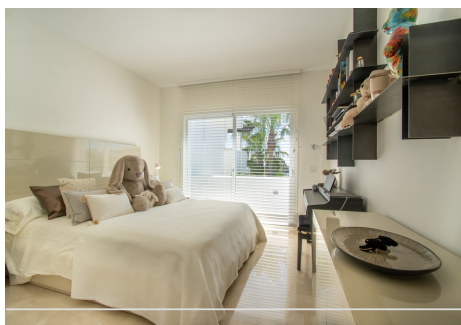
SEARCH FIND LOVE

of the World's top 100 golfers to improve their game and now you can sharpen up your game with the same transformational radar technology and mobile app.



HHomes

SEARCH FIND LOVE



HHomes - Camino de Camojan s/n, Edificio Camoján Center Oficina nº 15
Tel.: +34 951 543 462 – Email: info@hhomes.es – Web: <https://hhomes.es>

HHomes

SEARCH FIND LOVE



HHomes - Camino de Camojan s/n, Edificio Camoján Center Oficina nº 15
Tel.: +34 951 543 462 – Email: info@hhomes.es – Web: <https://hhomes.es>

HHomes

SEARCH FIND LOVE

