



7 Bedrooms House in Málaga

Málaga

R4629592 – 3.250.000 €



7



8



660 m²



3712 m²

OFF-PLAN LUXURY ECOLOGICAL VILLA IN MONTE MAYOR, BENAHAVIS WITH OPEN SEA VIEWS
Basement: elevator, garage for 3 cars and motorbikes, sauna, guest toilet, 2 technical rooms, fitness/workshop room, storage room, laundry room, hall with staircase, housekeep quarter with kitchenette and a double bedroom with ensuite bathroom, 2 patios. Ground floor: elevator, family room with bedroom, sitting area, and bathroom, a corridor that leads to 3 double bedrooms each with ensuite bathroom and access to the terraces and patios, hall with staircase, bodega/bar, and a relaxation/games area with and atrium. First floor: on the first floor you find, an elevator a spacious kitchen with a pantry/storage room, a dining area, an entrance hall, a guest toilet, and a spacious sitting area. The huge terraces and lounge/bar give you access to the spacious heated infinity pool and sea views. And finally, you have the master bedroom area with an elevator, a double master bedroom, dressing, ensuite bathroom, corridor, office space, and terraces with incredible sea views. Pictures of kitchens and bathrooms are examples of how it

HHomes - Camino de Camoján s/n, Edificio Camoján Center Oficina nº 15

Tel.: +34 951 543 462 – Email: info@hhomes.es – Web: <https://hhomes.es>

HHomes

SEARCH FIND LOVE

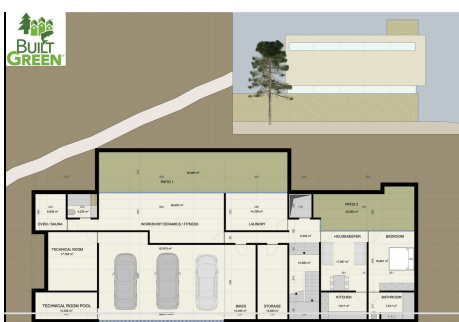
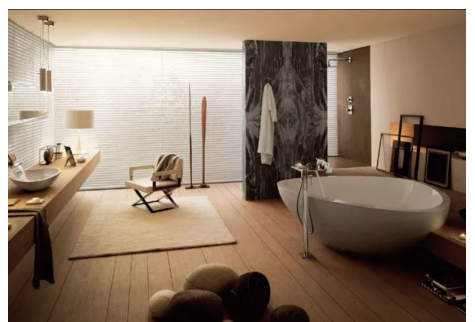
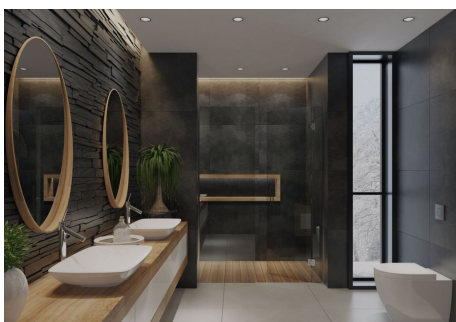
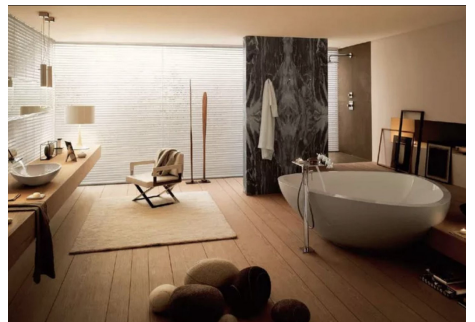
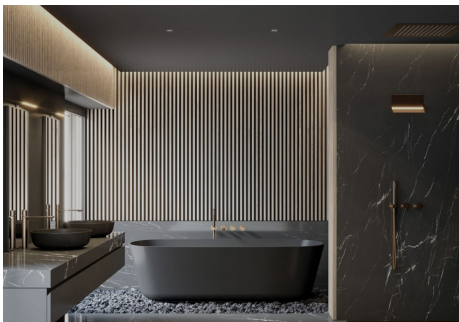
could be, but final choice will be that of the client! Example of some of the specifications, - An airtight building envelope - Thermal bridge-free design and construction - Ventilation with highly efficient heat or energy recovery - Exceptionally high levels of insulation - Well-insulated window frames and glazing - Ceiling high windows with a sunken track, 5+5/chamber/6+6 - Interior and exterior floor tiles from GRESPANIA 1200x1200 - 800x800 - 600x600 (Colour to choose) - Bathroom walls with COVERLAM plates (GRESPANIA) 2700X1200 (Color to choose) - Bathrooms from ROCA – VILLEROY BOCH – DURAVIT or similar - Aerothermia/airconditioning - Elevator from Schindler or similar - Water-based underfloor heating in the full villa - Ceiling-high and 1-meter-wide interior doors - Ceiling high entrance pivot door and 1,50-wide - Fully fitted kitchen with aluminum frame doors and covered with COVERLAM (Colour to choose) - Island with COVERLAM 3600X1600 no visible joints (Color to choose) - White goods from BOSCH – AEG – MIELE or similar - Heated pool with automatic cover - 20 voltaic panels - 3 lithium batteries of each 10kW - Car charger - Domótica We are a construction company, Key-in-Hand, that can design and construct any possibility you can think of. If you do not see a design of us that you like we design a totally new villa for you according to your ideas and input. Although we prefer to construct ecological building, we can construct from traditional construction to ecological constructions it all depends on you.



HHomes - Camino de Camoján s/n, Edificio Camoján Center Oficina nº 15
Tel.: +34 951 543 462 – Email: info@hhomes.es – Web: <https://hhomes.es>

Hhomes

SEARCH FIND LOVE



HHomes - Camino de Camoján s/n, Edificio Camoján Center Oficina nº 15
Tel.: +34 951 543 462 – Email: info@hhomes.es – Web: <https://hhomes.es>

HHomes

SEARCH FIND LOVE

